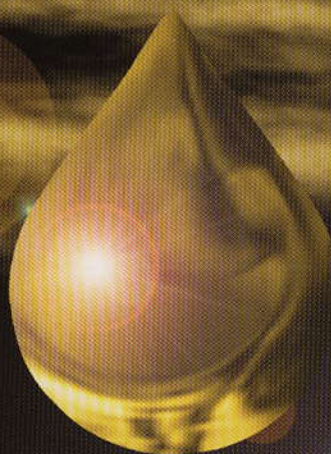


Vegalene®

Golden Canola Mist®



Pure Canola Oil Pan Coating

Get The Benefits Of:

High Quality All Natural Ingredients

- Low Linolenic Canola Oil
Reduces Gummy Build Up.
Delivers High Monounsaturated Oil.
Maintains High Oil Stability.
- Heat Resistant Lecithin
Eliminates Sticking.
Provides Wider Range of Cooking Temperatures.
Works Consistently Dispensing up to 30% More
Release Agents.
- All Natural – No Substitutes
No Inorganic Compounds.
No Alcohol, Water or Sodium.



**PAR-WAY TRYSON
COMPANY**
The Makers of **Vegalene®**

107 BOLTE LANE • ST. CLAIR MO 63077
CUSTOMER SERVICE: 1-800-642-0088

Vegalene® *Golden* Canola Mist®

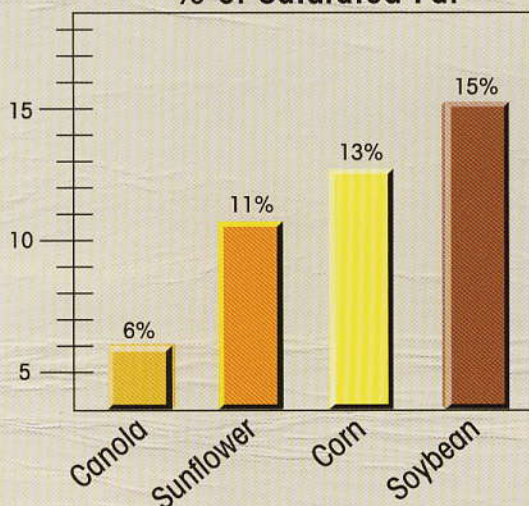


Health Is As Precious As Gold

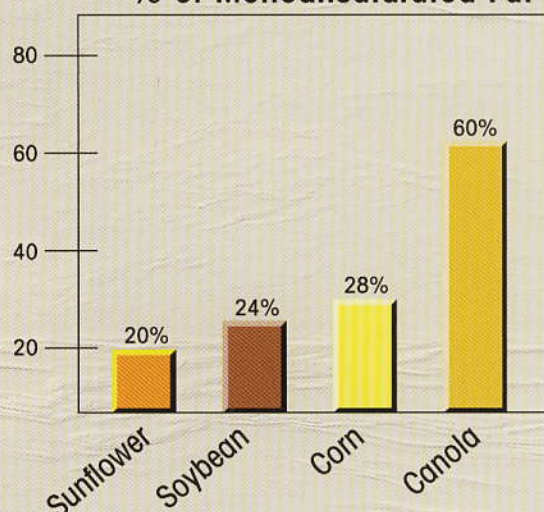
Canola oil is lower in saturated fats than other vegetable oils.

By contrast, it has one of the highest percentages of monounsaturates and imparts no taste to the food.

% of Saturated Fat



% of Monounsaturated Fat



Clinical studies indicate that substituting monounsaturated fats for saturated fats reduces serum cholesterol levels significantly while maintaining the appropriate level of HDL ("good") cholesterol. In addition, low linolenic canola oil has no trans fatty acids: trans fatty acids raise LDL levels for carrying cholesterol into the blood and lower HDL levels for carrying cholesterol away.

Ingredients: Low Linolenic Canola Oil, Lecithin, Natural Flavor and Propellant.

Ordering and Packing Information

Product Code: 17021

Pack Size: 6/16.5 oz. aerosol cans

Pallet: 39 x 4 = 156 cases

Gross Case Wt.: 8.2 Lbs.

Case Dimensions: 10" x 5.75" x 8.5"



107 Bolte Lane, St. Clair, MO 63077
Customer Service 800-642-0088 FAX 636-629-1330

NO

* inorganic compounds

Cholesterol
Sodium
Trans-Fatty Acids
Calcium Carbonate*
Silicon Dioxide*
Water
Alcohol

Nutrition Facts

Serv. Size About a 1/3
second spray (.25g)
Servings per cont.: 1868

Amount Per Serving

Calories 0

% DV*

Total Fat 0g 0%

Sodium 0mg 0%

Total Carb. 0g 0%

Protein 0g

*Percent Daily Values (DV) are
based on a 2,000 calorie diet.